



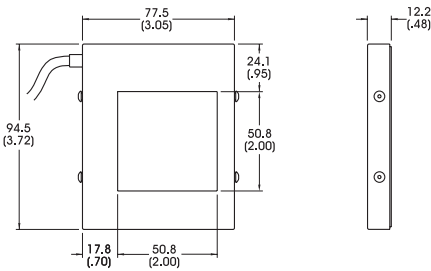
BL1520-660
(shown)

BL1520 Backlight

- 50mm x 50mm area of illumination.
- Low profile housing
- Designed to provide illumination for small objects where significant magnification is required for inspection.



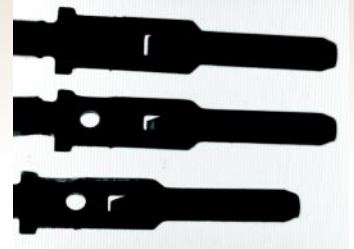
Light Function Diagram



DIMENSIONS ARE IN MILLIMETERS (INCHES)

Wire Lead Solution

Using an infrared BL1520 to eliminate the problem of lights interfering with human operators, this inspection checks wire leads. The object of the inspection is to make sure each lead is fully formed.



Acquired Solution Image

Standard Product Maximum Illumination

	Working Distance	Watts/cm ²	Lux
Constant Current	@ surface	500 μW	600
Strobed (100μs)	@ surface	10 mW	12,000

General Specifications

Light distribution	+/- 10%
Operating temperature	0 to 65C°
Standard product lifetime	100,000 hours
Product weight	271.3g 9.6 oz

Standard Variation Current Specifications

	(blue)	(green)	(yellow)	(orange)	(red)	(infra-red)	(white)	
@ 12v	N/A	N/A	80	80	120	130	N/A	mA
@ 24v	75	75	40	40	60	80	75	mA

Part Number Designation

Standard Product *SHIPPED NEXT DAY*

Part Number: **BL1520-660** (Configured for use with Ai Power Supply)

Standard Product Variation *SHIPPED WITHIN TWO WEEKS*

Spectral wavelength		Optional power Compatibility	
BL1520	-	XXX	XX
(blue)	470 †	12	
(green)	520 †	24	
(yellow)	590		
(orange)	625		
(red)	660		
(infra-red)	880		
(White)	WHI †		

†Not available in 12v

Have a question?
Call us @ 802.767.3830 or FAX @ 802.767.3831