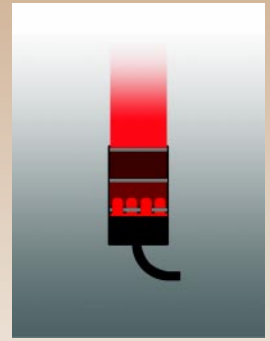


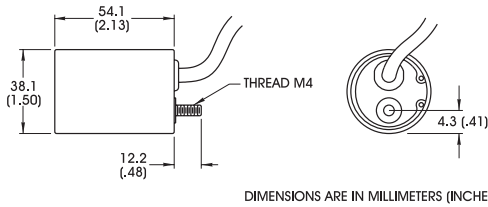
BL5420-6604
(shown)

BL5420 Backlight

- Available in 4mm or 20mm spot sizes.
- Can be used as a diffuse light source.
- Designed to provide illumination for small objects where significant magnification is required for inspection.

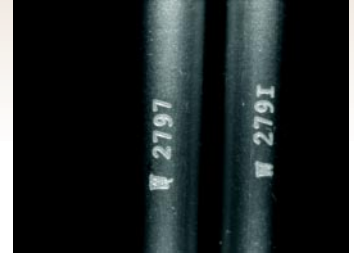


Light Function Diagram



OCR Inspection

In an example of a backlight being used to provide extremely diffuse illumination, the BL5420 is used for OCR on a cylindrical object. The reflective color of the etched characters against the matte finish of the cylinder created glare if direct light was used.



Acquired Solution Image

Standard Product Maximum illumination

	Working Distance	Watts/cm ²	Lux
Constant Current	@ surface	6.7 mW	3,200
Strobed (100µs)	@ surface	134 mW	64,000

General Specifications

Light distribution	+/- 10%
Operating temperature	0 to 65C°
Standard product lifetime	100,000 hours
Product weight	135.2 g 4.8 oz

Standard Variation Current Specifications

	(blue)	(green)	(yellow)	(orange)	(red)	(infra-red)	(white)	
(4mm FOV) @ 12v	N/A	N/A	40	40	60	75	N/A	mA
(4mm FOV) @ 24v	20	20	20	20	30	40	40	mA
(20mm FOV) @ 12v	N/A	N/A	80	80	120	130	N/A	mA
(20mm FOV) @ 24v	75	75	40	40	60	80	75	mA

Part Number Designation

Standard Product **SHIPPED NEXT DAY**

Part Number: **BL5420-6604** (Configured for use with Ai Power Supply)

Standard Product Variation **SHIPPED WITHIN TWO WEEKS**

BL5420	-	Spectral wavelength			Optional power Compatibility		
		Field of View (mm)					
		XXX	XX	XX			
		(blue) 470 †	4	12			
		(green) 520 †	20	24			
		(yellow) 590					
		(orange) 625					
		(red) 660					
		(infra-red) 880					
		(White) WHI †					

† Not available in 12v

Our **BL5420** is offered in **4mm** and **20mm** Field of View choices.

Have a question?
Call us @ 802.767.3830 or FAX @ 802.767.3831