



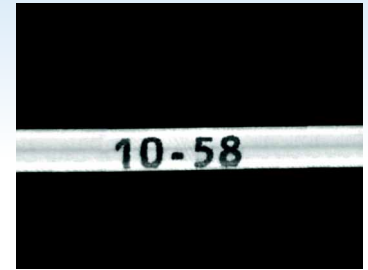
DL9160-RGB
(shown)

DL9160 Diffuselite

- Rugged construction.
- Available in an RGB "All color" version.
- A modified, extremely efficient integrating light source.



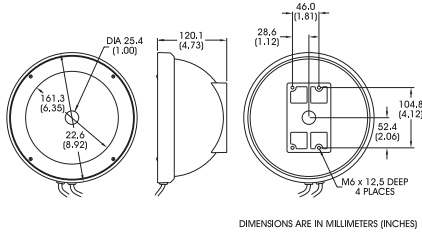
Light Function Diagram



Acquired Solution Image

Cylindrical OCR Solution

Optical Code Recognition (OCR) on cylindrical objects creates a number of problems for illumination. The shape of the part causes light to reflect most brightly from the center of the cylinder – the section closest to the light source – and less brightly as the part curves away from the light. The result is inconsistent contrast, causing false or incomplete readings. In an effort to "surround" the cylinder with light, our largest dome, the DL9160, was placed over the part. The result is sufficient light to create regular contrast.



Standard Product Maximum illumination	Working Distance	Watts/cm ²	Lux
Constant Current	75mm	460 μW	540
Strobed (100μs)	75mm	9.2 mw	19,800

General Specifications

Light distribution	+/- 10%
Operating temperature	0 to 65°C
Standard product lifetime	100,000 hrs
Product weight	1,723.6 g 60.8 oz

Standard Variation Current Specifications	(blue)	(green)	(yellow)	(orange)	(red)	(infra-red)	(white)	(RGB)
@ 12v	N/A	N/A	480	480	720	800	N/A	N/A
@ 24v	420	420	240	240	360	480	420	560

Part Number Designation

Standard Product **SHIPPED NEXT DAY**

Part Number: **DL9160-660** (Configured for use with Ai Power Supply)

Standard Product Variation **SHIPPED WITHIN TWO WEEKS**

DL9160	Optional power Compatibility	
	Spectral wavelength	
-	XXX	XX
(blue)	470 †	12
(green)	520 †	24
(yellow)	590	
(orange)	625	
(red)	660	
(infra-red)	880	
(White)	WHI †	
(all color)	RGB †	

† Not available in 12v