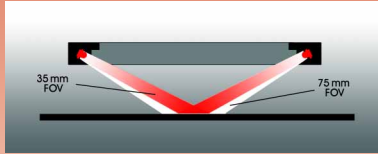
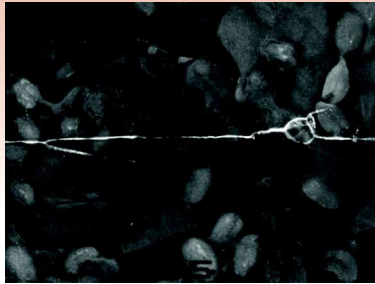


RL1660 Apposelite



Light Function Diagram

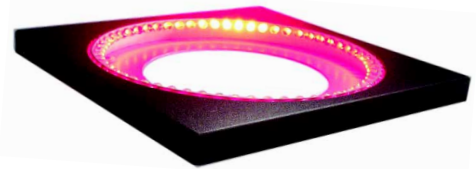
- 35mm field of view standard.
45 and 70mm FOV optional.
- Solves a wide array of imaging problems where low angle of incidence, radial illumination is required



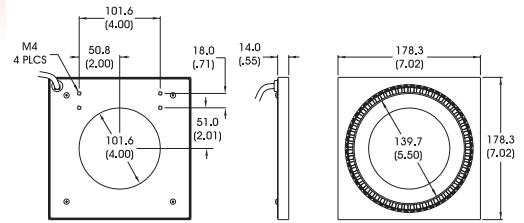
Acquired Solution Image

RL1660 Solution

Low angle illumination allows the vision system to inspect seams on food packaging. The goal of the inspection using the RL1660 is to detect holes and gaps in plastic wrap.



RL1660-660
(shown)



DIMENSIONS ARE IN MILLIMETERS (INCHES)

Standard Working Distance

Optimal WD	12.7mm (0.5")
Range	up to 38.1mm (1.5")

General Specifications

Light distribution	+/- 10%
Operating temperature	0 to 65°C
Standard product lifetime	100,000 hrs
Product weight	572.4 g 20.2 oz

Standard Variation Current Specifications

	(blue)	(green)	(yellow)	(orange)	(red)	(infra-red)	(white)	
@ 12v	N/A	N/A	200	200	360	420	N/A	mA
@ 24v	280	280	120	120	180	240	280	mA

Standard Product Maximum Illumination

Due to the inherent nature of dark field illumination accurate maximum illumination figures are not available.

Part Number Designation

Standard Product ***SHIPPED NEXT DAY***

Part Number: RL1660-66035 (Configured for use with Ai Power Supply)

Standard Product Variation ***SHIPPED WITHIN TWO WEEKS***

Spectral wavelength	Optional power Compatibility	
	Field of view (mm)	
RL1660 -	XXX	XX XX
(blue) 470†	35	12
(green) 520†	45	24
(yellow) 590	70	
(orange) 625		
(red) 660		
(infra-red) 880		
(white) WHI†		

† Not available in 12v