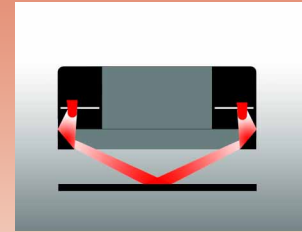




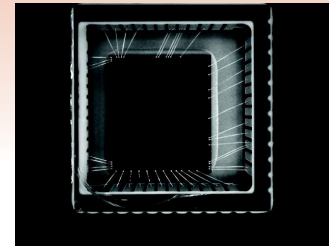
RL3940-660
(shown)

RL3940 Apposelite

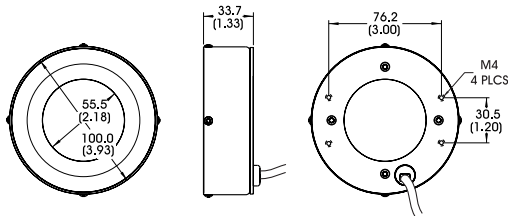
- Low angle illumination in a compact 100mm diameter housing.
- Solves a wide array of imaging problems where low angle of incidence, radial illumination is required
- Includes mounting bracket part no. CB092



Light Function Diagram



Acquired Solution Image



DIMENSIONS ARE IN MILLIMETERS (INCHES)

RL3940 Solution

In this example, the RL3940 is used to highlight the wiring on a chip. The multi-levelled chip benefits from the low angle, radial illumination, presenting the ultra-fine wires as white lines, allowing the vision system to inspect for presence/absence as well as placement.

Standard Working Distance

Optimal WD	12.7mm (0.5")
Range	up to 152.4mm (6.0")

General Specifications

Light distribution	+/- 10%
Operating temperature	0 to 65°C
Standard product lifetime	100,000 hrs
Product weight	338.4 g 11.9 oz

Standard Variation Current Specifications

	(blue)	(green)	(yellow)	(orange)	(red)	(infra-red)	(white)	
@ 12v	N/A	N/A	200	200	360	420	N/A	mA
@ 24v	280	280	120	120	180	240	280	mA

Standard Product Maximum Illumination

Due to the inherent nature of dark field illumination accurate maximum illumination figures are not available.

Part Number Designation

Standard Product *SHIPPED NEXT DAY*

Part Number: **RL3940-660** (Configured for use with Ai Power Supply)

Standard Product Variation *SHIPPED WITHIN TWO WEEKS*

RL3940	X	-	XXX	XX
	B			

Optional power Compatibility

Spectral wavelength

(blue) 470†
(green) 520†
(yellow) 590
(orange) 625
(red) 660
(infra-red) 880
(white) WHI†

Version "B" Mounting Option

DIMENSIONS ARE IN MILLIMETERS (INCHES)

† Not available in 12v