



Pulsar 710 High Current Strobe Controller



Ai 100 Amps @ 100 Volts total output in strobed mode

Ai 8 Amps @ 24 Volts total output in constant mode

Ordering Information

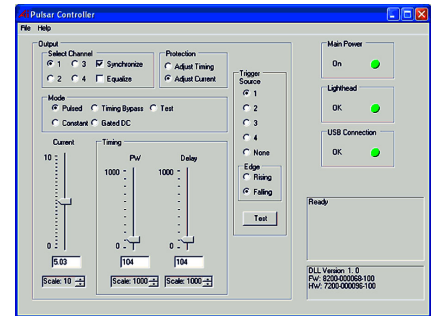
Standard Product:
Shipped Next Day

Pulsar 710

Optional Asynchronous Triggering

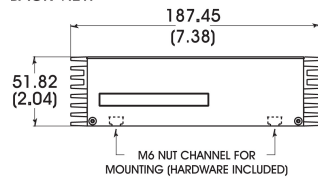
Standard Product:
Shipped Next Day

Signatech software enables the user to program all strobe controller current and timing parameters. Currents are programmable for each of four channels, and expressed in amps from 0-25. Timing parameters include pulse width, and post event delay time. All timing parameters are programmed in steps of 1 microsecond, up to a maximum of 1000.

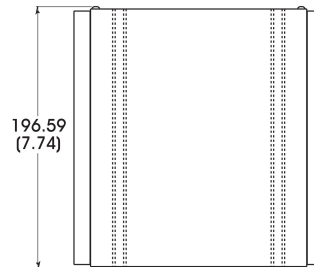


Dimensional Information

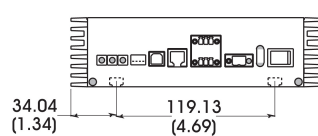
BACK VIEW



TOP VIEW



FRONT VIEW



DIMENSIONS ARE IN MILLIMETERS (INCHES)

Additional Information

Pulse Parameter	Range	Computer Increment
On Time		
Delay Time		
Stop Time		
Off Time		
Hold Time		

Standard Product Information

Operating Temperature: 0-50° C



Meets CE standards